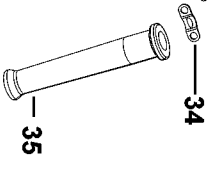
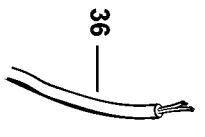
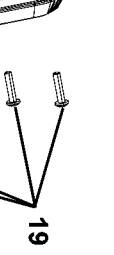
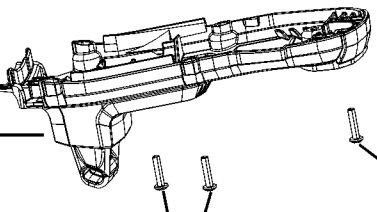
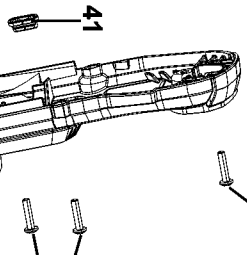
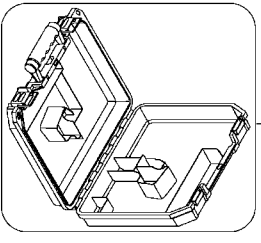
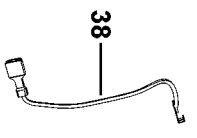
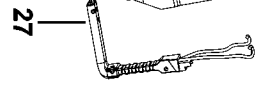
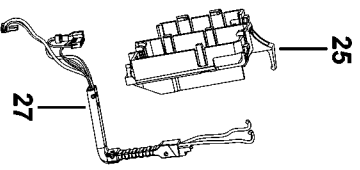
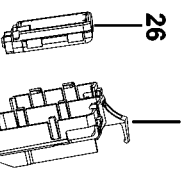
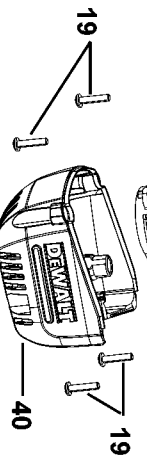
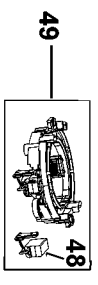
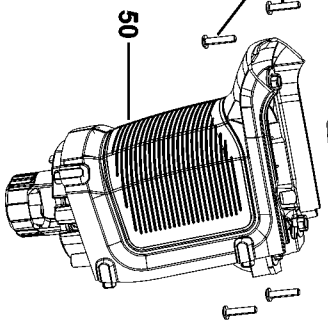
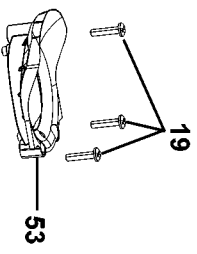
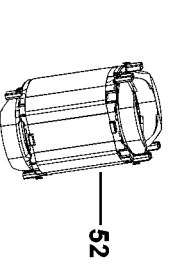
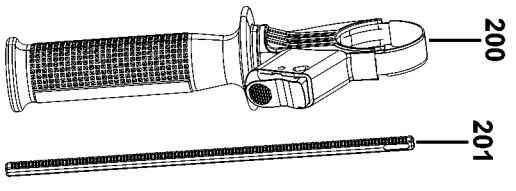
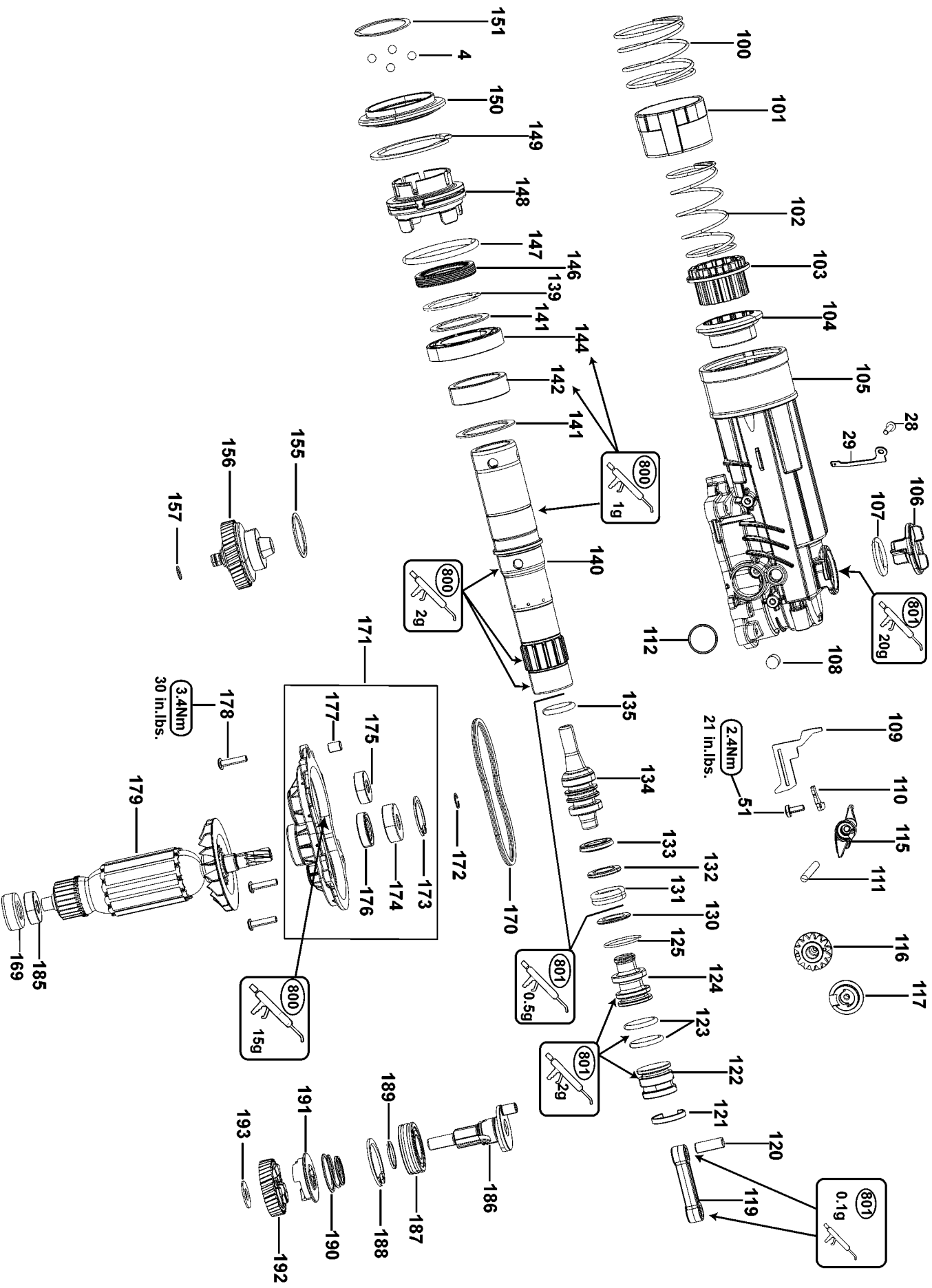


Perform & Protect

831





Parts List for D25416K Type 2

Item Number	Part Number	Description	Qty Required
1	323489-00	CAP	1
2	579212-00	RING	1
3	N038727	TUBE	1
4	583890-00	BALL	5
5	578387-00	WASHER	1
6	N038938	SPRING	1
7	N514338	CIRCLIP	1
8	N106154	COVER	1
9	324006-14	SCREW	3
10	N106172-02	COVER	1
11	N275419	SLEEVE	1
12	N379503	SPINDLE	1
13	N016357	WASHER	1
15	N106173-02	COVER	1
16	N150304	KNOB	1
17	1008957-00	SPRING	2
18	N379400	HANDLE SET	1
19	330065-08	SCREW	19
20	N106188	COMPRESSION SPRING	1
22	N152623	STOP	1
23	N192178	RELEASE BUTTON	1
24	N106221-00	BELLOWS	1
25	N186074	HOLDER	1
26	N274643	CONTROL MODULE	1
27	N379402	WIRE HARNESS	1
28	N394065	SCREW	1
29	N389342	GROUND STRAP	1

Parts List for D25416K Type 2

Item Number	Part Number	Description	Qty Required
30	N145497	SWITCH	1
31	N106222	BELLOWS	1
32	N159443	AXIS	1
34	821070	CORD CLAMP	1
35	403395-00	CORD PROTECTOR	1
36	330011-15	CORDSET	1
37	N106186-00	PLATE	1
38	N578054	CONNECTING WIRE	1
40	N106181-00	END CAP	1
41	656183-00	LENS	1
42	330065-35	SCREW	2
46	N135728	SELECTOR	1
47	326467-00	DETENT	1
48	N379405	BRUSH PAIR	1
49	N379407	BRUSH & HOLDER ASSY	1
50	N106153	MOTOR HOUSING	1
51	324006-14	SCREW	4
52	N379408	FIELD	1
53	N137273	FAN BAFFLE	1
54	326619-00	SCREW	1
55	N015311	CONNECTOR	1
100	323395-07	SPRING	1
101	N106220	SLEEVE	1
102	N106166	COMPRESSION SPRING	1
103	N106162	SLEEVE	1
104	N379410	BEVEL GEAR	1
105	N379411	GEAR HOUSING	1

Parts List for D25416K Type 2

Item Number	Part Number	Description	Qty Required
106	N106179	CAP	1
107	N252840	O-RING	1
108	582865-00	FILTER	1
109	N147987	PLATE	1
110	N106187	LEVER	1
111	330041-44	ROLLER PIN	1
112	323711-05	O-RING	1
115	N149242	SELECTOR FORK	1
116	N149241	ECCENTRIC	1
117	N150303	GEAR	1
119	N407255	CONNECTING ROD	1
120	N123257	PIN	1
121	325905-01	PISTON RING	1
122	N379413	PISTON	1
123	N106150	O-RING	2
124	N407083	RAM	1
125	N106174	RING	1
130	N511780	SUPPORT WASHER	1
131	N179781	DAMPER	1
132	N511566	WASHER	1
133	N106146	SEAL	1
134	N536059	BEAT PIECE SVC. KIT	1
135	N181843	O-RING	1
139	586762-00	CIRCLIP	1
140	N525737	SPINDLE	1
141	1005982-00	WASHER	2
142	N218372	DAMPER	1

Parts List for D25416K Type 2

Item Number	Part Number	Description	Qty Required
144	N106168	SLEEVE BEARING	1
146	1007828-00	SEAL	1
147	N218672	O-RING	1
148	N122310	HOLDER	1
149	N181847	LOCKING RING	1
150	N184524	CAP	1
151	577795-00	RING	1
155	N252839	O-RING	1
156	N379416	CLUTCH ASSEMBLY	1
157	323711-26	RING,O	1
169	N136311	BOOT	1
170	N106217	GASKET	1
171	N379417	GEAR HOUSING	1
172	N148663	CLIP	1
173	N219512	RING	1
174	330003-96	BALL BEARING	1
175	330003-39	BEARING,BALL	1
176	327141-05	SEAL	1
177	327575-00	SLEEVE	1
178	324007-11	SCREW	7
179	N379419	ARMATURE ASSY.	1
185	N381533	BEARING & SEAL	1
186	N379421	CRANKSHAFT	1
187	323872-06	BEARING BALL	1
188	324821-04	CIRCLIP	1
189	N181846	CIRCLIP	1
190	N199272	SPRING	1

Parts List for D25416K Type 2

Item Number	Part Number	Description	Qty Required
191	N106160	SLEEVE	1
192	N379422	GEAR	1
193	N106163	WASHER	1
200	N276149	SIDE HANDLE	1
201	798846-02	DEPTH STOP	1
800	870889-03	GREASE	1
801	487130-04	GREASE	3
821	N524624	RATING LABEL	1
831	N376895	LABEL	1
861	N377020	KIT BOX	1